



# SAMARA

Dining table

# SAMARA

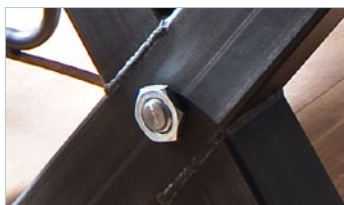
## Dining table

### Dining table **SAMARA**

Table top: cracked oak solid/oiled / with traces of usage and life

Edge frame: black steel, clear lacquered

Thickness of the table top: appr. 40 mm



**SA118EIW** W - H - D appr. 180 - 77 - 100 cm

**SA120EIW** W - H - D appr. 200 - 77 - 100 cm

**SA122EIW** W - H - D appr. 220 - 77 - 100 cm

**SA124EIW** W - H - D appr. 240 - 77 - 100 cm



Dining table **SAMARA** with cantilever chair **ABERDEEN**

The specified measurements are approximate; we reserve the right to make technical changes and corrections to the model. Some sketches are not to scale. Please note the cm specifications. As of 12/2018